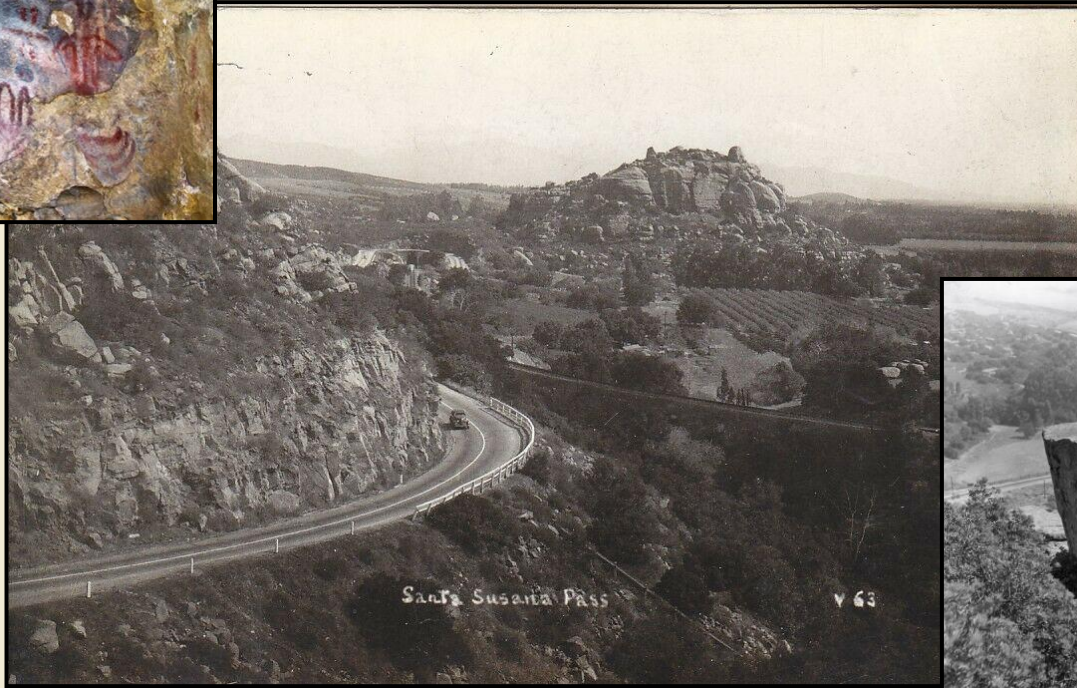


# Stoney Point History



# Topics to be covered

- Geology – The Chatsworth Formation
- Prehistory – Momonga, and The Apeta Momonga Mission Trail
- 1871 – Earliest map with Stoney Point
- 1886 – Homesteader George Charlton and family arrives
- 1920's residents – Driscoll, Turner, Haworth, Wilson, Johnson
- The seven names of Stoney Point
- Later residents at the Charlton Residence site
- 1948-50 – American Legion 4<sup>th</sup> of July Parade, Carnival and BBQ at Stoney Point
- 1974 – Los Angeles Historic-Cultural Monument # 132
- 1982 – Stoney Point is purchased and becomes a 22 acre City Park,
  - 1999 – 52 acres added north of Stoney Point
  - 2007 – The 5 acre Stoney Point Ranch is purchased by the City
- Rock Climbing at Stoney Point
- Films with Stoney Point

# Chatsworth Geology

Our massive boulders and weathered rock outcrops are known to Geologists as the Chatsworth Formation.

It was created 68 million years ago, 5,000 feet below sea level. Massive landslides and quiet periods of silt molded our sandstone boulders. At some point the formation was lifted above sea level, and the upper portion of the formation eroded away. Today, it is 1,000 feet above sea level.



Chatsworth is part of the North Pacific Plate, which is colliding with the North American Plate along the San Andreas Fault. As a result, the margin of the North Pacific Plate has been uplifted and tilted to the northwest.

# Stoney Point

- Native American tribes that lived in the valley included the Tataviam (north), Tongva (south east) and the Chumash (west).
- The Spanish documented a village named **Momonga**, also known as Ranchería de las Piedras (Village of the Stones)
- It was located somewhere near Stoney Point and the eastern slope of the Simi Hills, in the vicinity of the Santa Susana Pass.

*Los Angeles  
Historic-Cultural  
Monument # 132 in 1974*



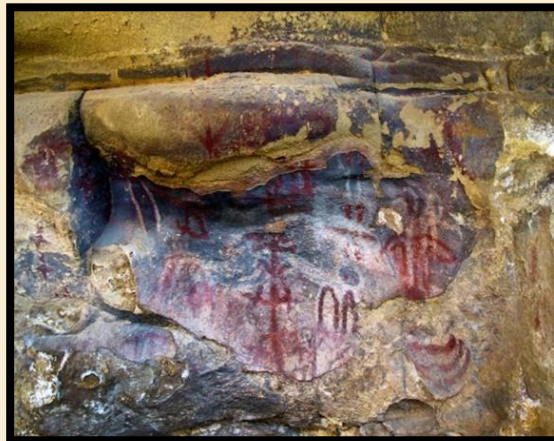
# The Apeta Momonga Mission Trail

## Our most recent Historic-Cultural Monument, approved in 2019

- The trail began at least 3,000 years ago to travel from Achoicominga (San Fernando) to the village of Momonga (Santa Susana Pass/Stoney Point). It later became a part of the El Camino Real along the north end of the San Fernando Valley, offering safe passage to travelers along its route.
- The 2 mile trail runs from De Soto to Tampa, following a path parallel and just south of the 118 freeway. The trail remains a simple equestrian and hiking trail, with a view of the broad San Fernando Valley to the south.

Los Angeles  
Historic-Cultural  
Monument #1177 in 2019

Presentation: [The Apeta  
Momonga Mission Trail](#)



# Momonga Rock Art

- The most striking example of the extensive rock art at the site is the Chatsworth Main Panel.
- It is on private property ¼ mile east of Stoney Point, at today's DNA Prep Academy (previously Chatsworth Hills Academy).
- Most of the panel has eroded away and is difficult to see.
- When it was new and fresh, the main panel may have been as impressive as the main panel at Burro Flats Painted Cave, which is listed in the National Register of Historic Places.
- The presence of a sulfur spring -- often considered sacred and medicinal – coupled with the extensive presence of rock art, clearly establishes a sacred/ceremonial value to this site...



Chatsworth Site Main Panel  
(digitally enhanced using D-Stretch)  
Source: Knight 2018

# Walker's Chatsworth Cairn Site

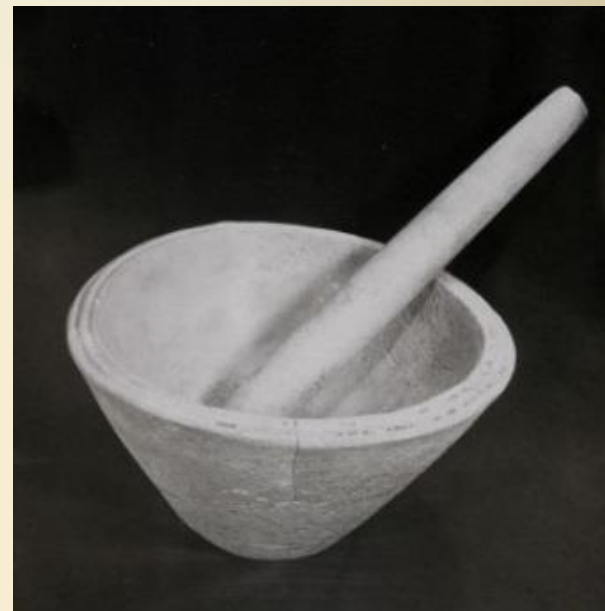
- In January of 1939 Mrs. Julius Fried of Chatsworth called at the Southwest Museum and presented a soapstone artifact which had been unearthed by a plow at the [Fried citrus ranch](#) in Chatsworth.
- A team of archaeologists and volunteers led by Edwin Walker documented and excavated artifacts over 23 days. It was called the "Chatsworth Cairn Site", and was determined to be ceremonial in nature.
- The Fried Ranch was at today's northeast corner of Canoga and Celtic, 1/3 mile east of Stoney Point. Today it is single family homes built in 1980 and 1984.



Steatite Beads  
Chatsworth Cairn Site, CA-LAN-21  
Autry Collection Online

# Walker's Chatsworth Cairn Site

- The cairns were underground, and comprised mostly of broken stone bowls and pestles, manos and metates.
- Also found were atlatl points, sandstone bowls, and some fragments of cremated human bones that indicated the sites were mortuary in character.
- The artifacts ranged from 1,000 B.C. to A.D 1,000.



Top: Ceremonial sandstone bowl  
and pestle

Left: gorget/pendant and disc-  
shaped object

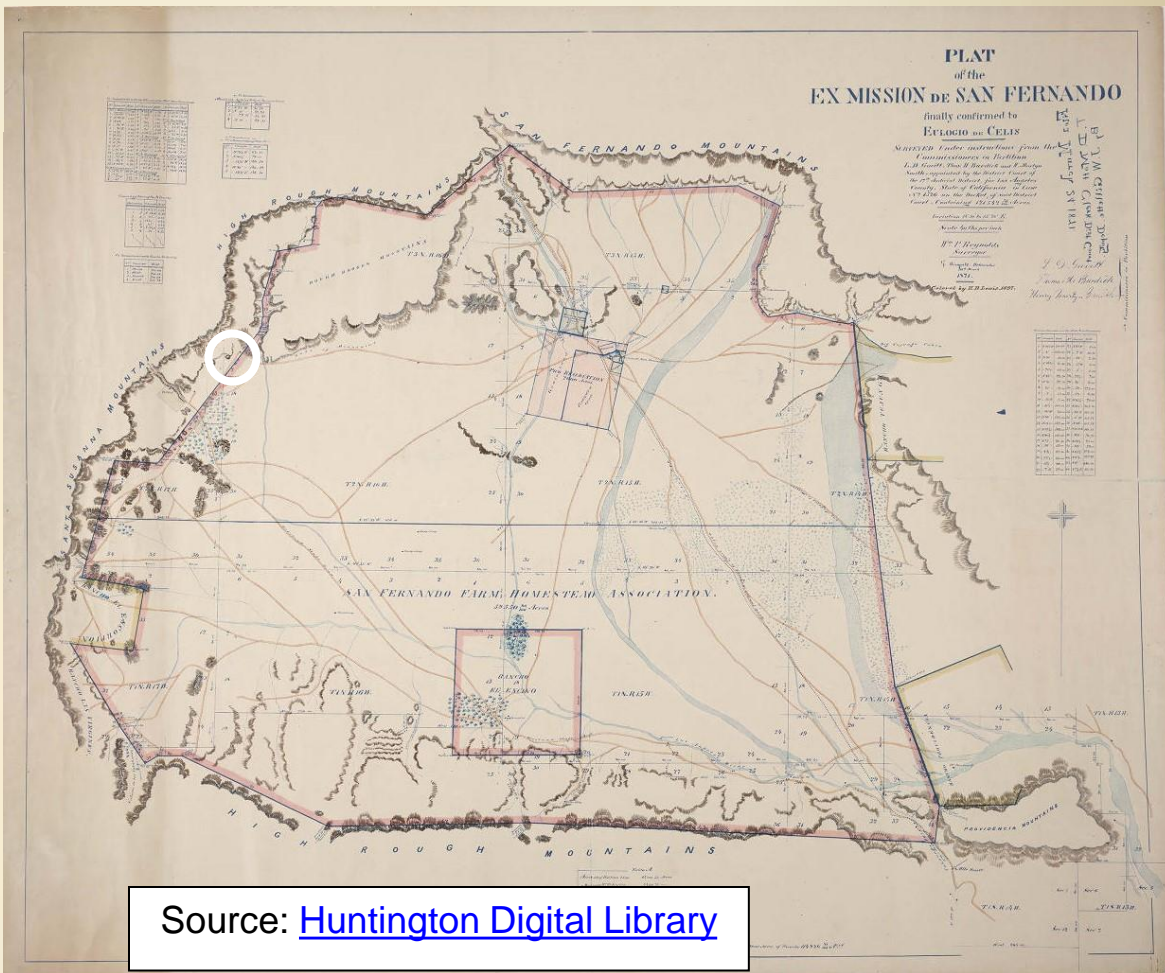
Chatsworth Cairn Site, CA-LAN-21  
Autry Collection Online



**1871 – Earliest Map of Stoney Point**  
**1899 - Homesteader George**  
**Charlton earns his homestead**  
**1904 – Tunnel 28 at the north end of**  
**Stoney Point**  
**Sunset magazine article Charlton’s**  
**son Robert**

# 1871 - Earliest Map of Stoney Point

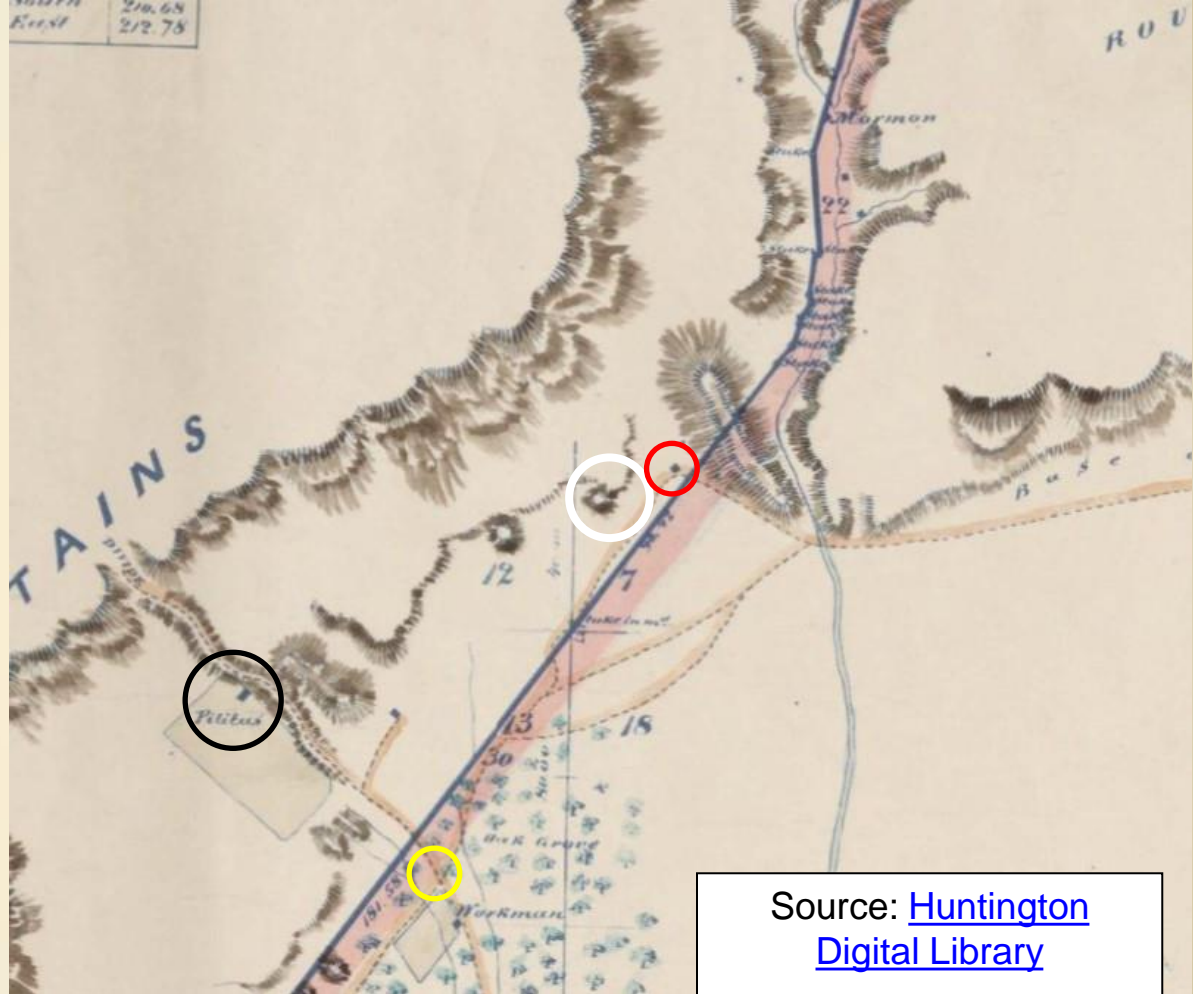
- At right: The “1871 *Plat of the Ex Mission de San Fernando finally confirmed to Eulogio de Celis*”
- This map of the San Fernando Valley was used by California to determine the boundaries of Ex-Mission Lands.
- Stoney Point is in the upper left hand corner, circled in white.



Source: [Huntington Digital Library](#)

# 1871 Map of Stoney Point

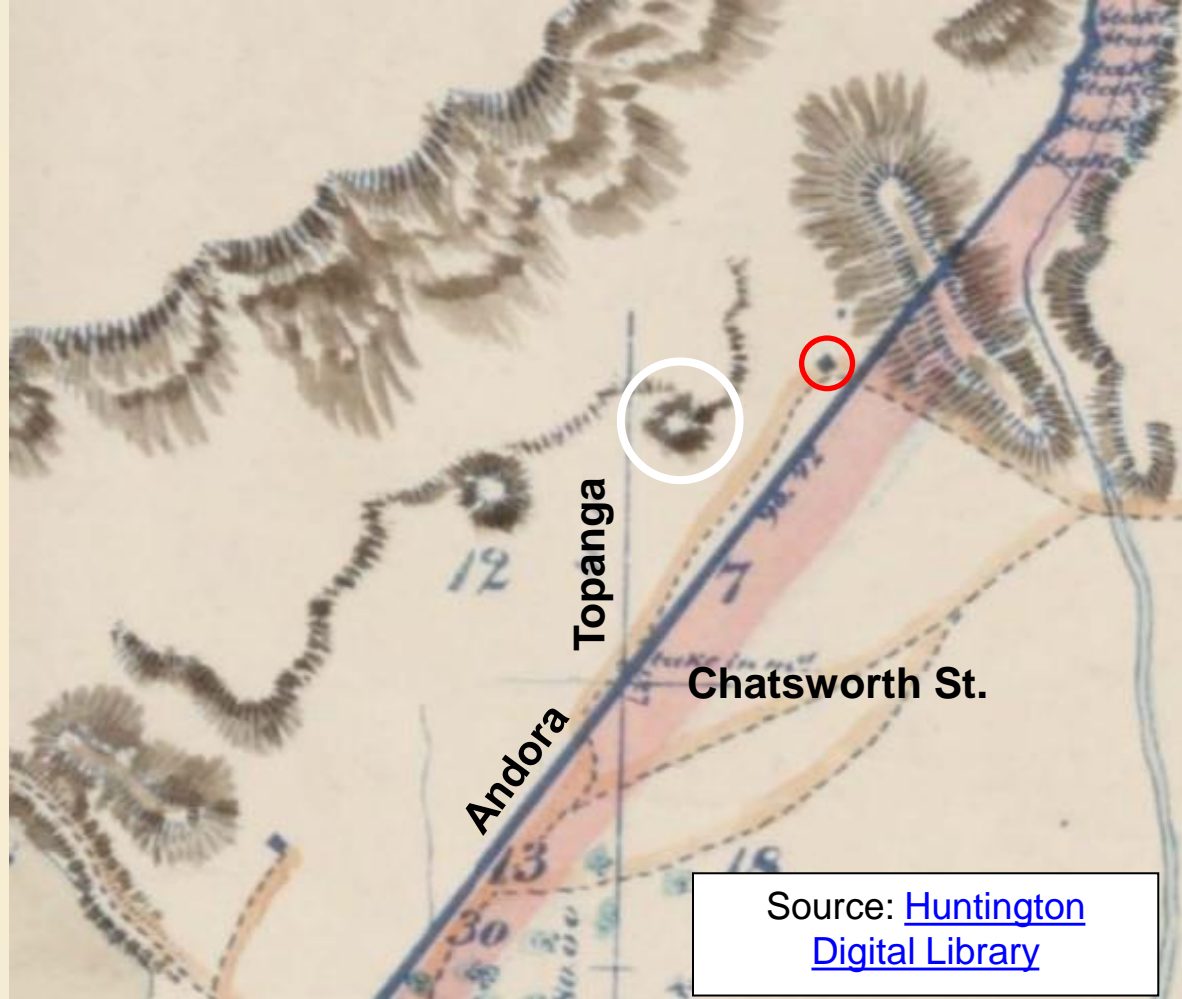
- Stoney Point is circled in white.
- The diagonal line is Andora
- The Mission Trail at the base of the mountains leads to a house (circled in red), then down to the Stagecoach trail (circled in yellow), then up the Stagecoach trail to the De La Ossa Adobe Stagecoach waystation (circled in black)
- The rectangular area around the waystation is “[Las Pilitas](#)” (the small fountains), a historically significant source of water.



Source: [Huntington Digital Library](#)

# 1871 Map of Stoney Point

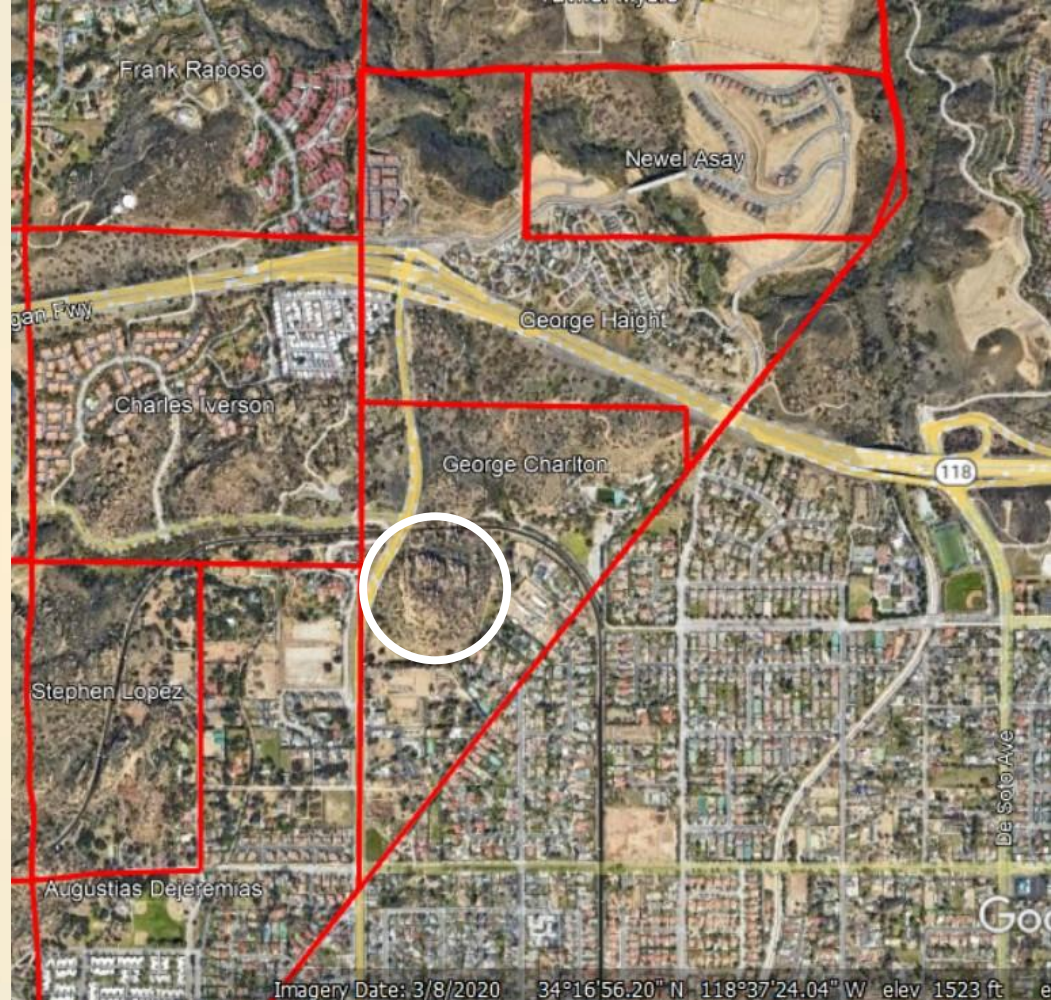
- Stoney Point is circled in white.
- Current streets are labeled.
- The house circled in red is where today's DNA Prep Academy is located (previously Chatsworth Hills Academy).
- And it is where the Homesteader George Charlton and his family were living in 1886 or earlier.



Source: [Huntington Digital Library](#)

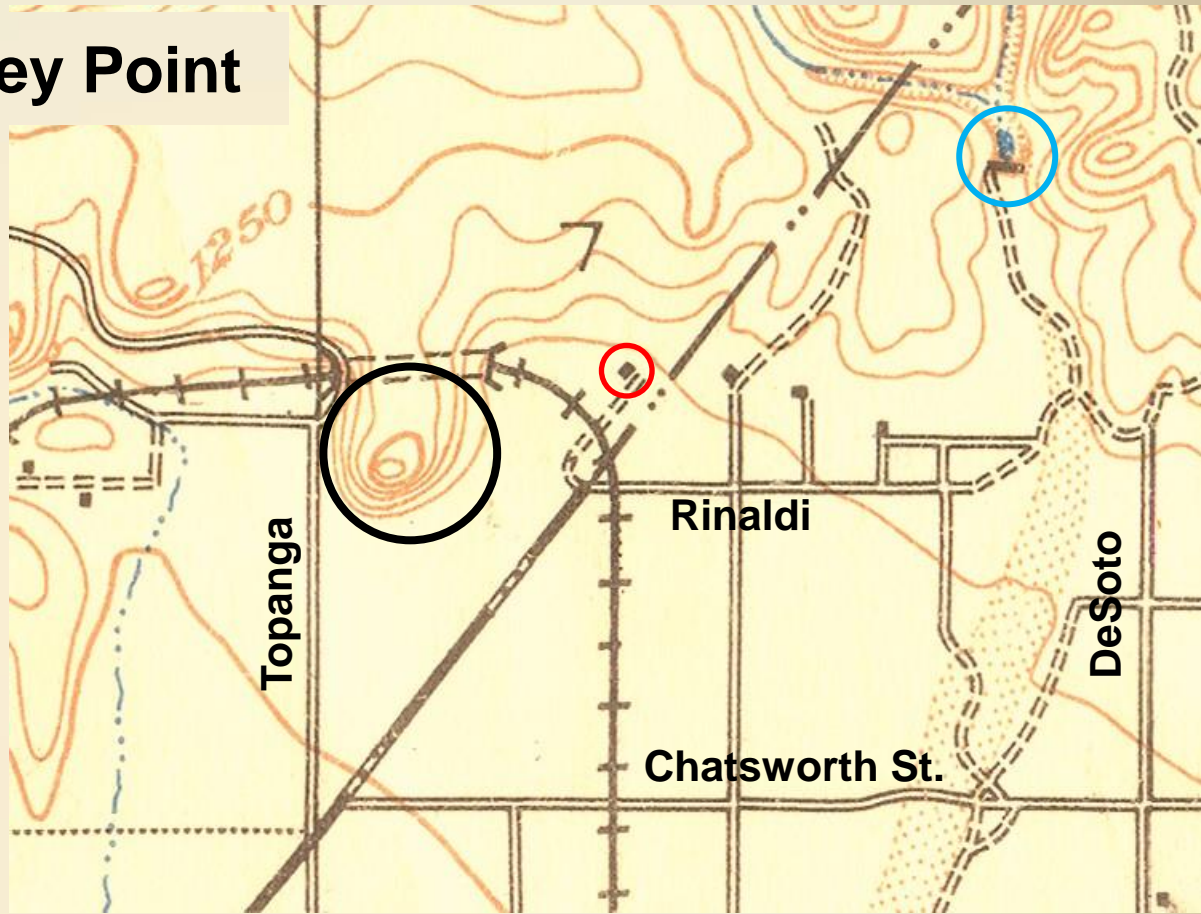
# Charlton Homestead

- Stoney Point (circled in white) is in northern Chatsworth, just south of the 118 Freeway and east of Topanga Canyon Blvd. The Google Earth map at right shows an overlay of the circa 1900 Chatsworth Homesteader boundaries.
- The diagonal line is Andora; everything east was a part of the 1847 Rancho Ex-Mission de San Fernando lands, which became Chatsworth Park in 1888; everything west was government land to be homesteaded.
- George Charlton homesteaded the 137 acre parcel that included Stoney Point beginning in 1886 or earlier. He was granted the homestead in May 1899.



# 1903 Topo map Stoney Point

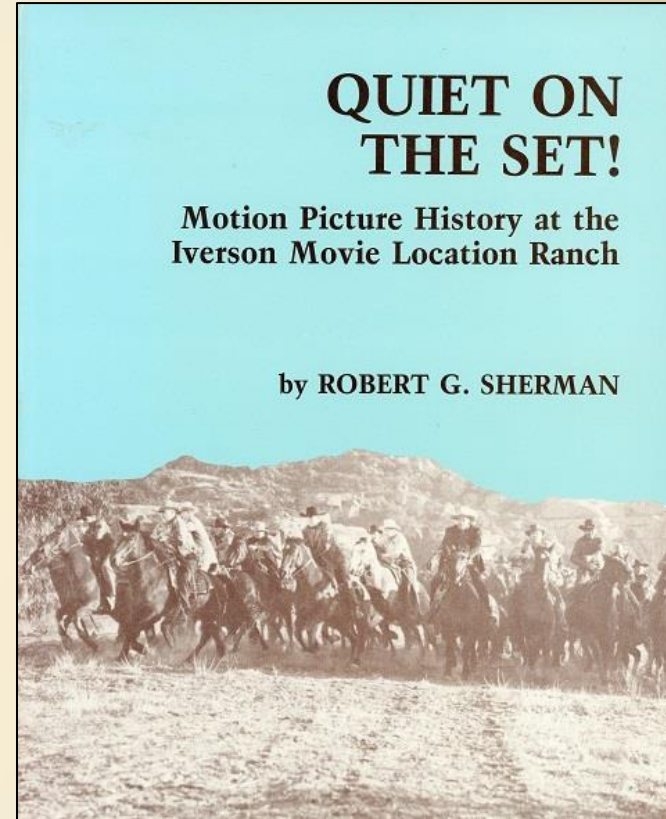
- This is section 7 in a 1903 topo map, each line indicates an elevation change of 50 ft.
- Stoney Point is circled in black, Charlton's house is circled in red.
- He lived off of Rinaldi (the old Mission Road) where DNA Prep Academy is today.
- Notice that all of the homes (identified as black squares) are in the foothills near the water.
- The 1889 Chatsworth Dam is circled in blue (and still exists today, but is silted up).



[1903 USGS Topographical Map – Santa Susana](#)

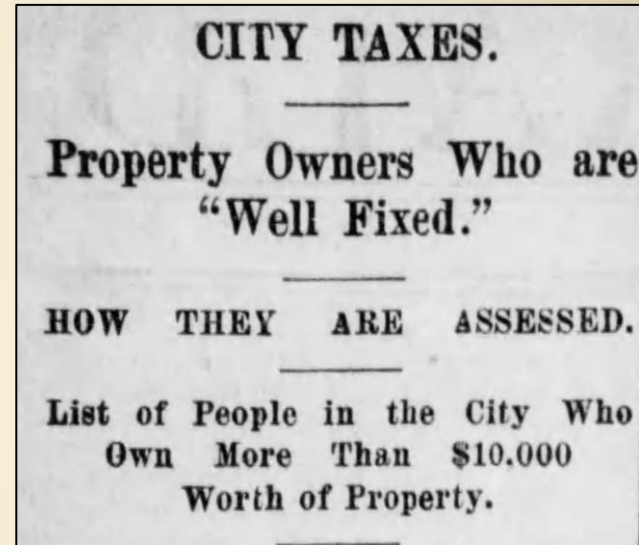
# George Charlton Timeline in Chatsworth

- George Gray Charlton was born in 1835 in New York and of English decent. George and his wife, Mary, had 3 sons, Oliver, Frederick, Robert and one daughter Anna.
- 1880 Census - George was a banker, they were living in Iowa.
- 1882 - the Charltons arrive in Los Angeles and are staying downtown at the Pico House.
- 1886 - Rhoda Jane (married to James Hill) visited Chatsworth as the guest of Mr. Charlton in the Spring of 1886. The Hill family moved from Los Angeles with their children to Chatsworth, and took up squatters rights on 110 acres, homesteading it.
- 1888 - A reference from “Quiet on the Set!” pg35 – Charles Iverson was “*building the dam on the Charlton Ranch*”, wandered around one day and met his future wife Augusta, who was homesteading the parcel to the west. The Iversons were married in 1888.



# George Charlton Timeline in Chatsworth

- In 1889, George made the list of “Property Owners who own more than \$10,000”. His property was assessed at \$18,905
- In the 1892 and 1894 Chatsworth Directory, George is listed as an apiarist (bee-keeper).
- The 1896 Voter Registration records list him as a horticulturist.
- In 1899, when he was 66 years old, his 137 acre Homestead was recorded.
- In the 1900 Chatsworth census, George and wife Mary are living at the homestead with George’s older widowed sister Ellen Charlton Sampson
- In the 1910 Census they are retired in Pomona.
- 1917 Fire - Page 218 Grandma Ann - All the heavy brush between the Iverson place and Stoney Point was burned and the apiary “just on the other side of the tunnel”. The owners lost their house and almost a hundred hives of bees.”

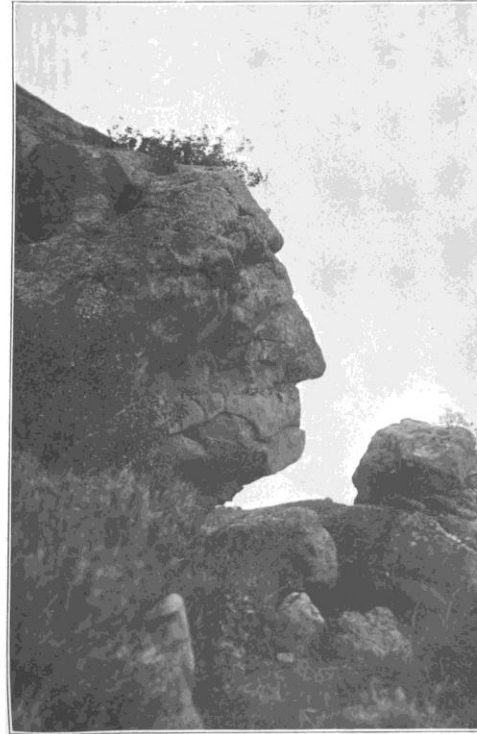


1889-7-19 Los Angeles Herald



# Robert Charlton

- In August 1902, Charles Lummis, published a magazine *Out West*. It included the photograph (at right) of Indian Rock, today known as George Washington Rock, in Chatsworth. The photo was taken by Charles' 25 year old son, Robert.
- Charles Lummis would become City Librarian of the Los Angeles Public Library in 1905.



INDIAN-HEAD ROCK, CHATSWORTH PARK, CAL. Photo by Robt. T. Charlton.

Digitized by Google

# Robert Charlton

- In 1904, Charlton's 27 year old son Robert wrote an article for Sunset Magazine, "The Story of a Great Tunnel"
- With Photographs by the author

[The Story of a Great Tunnel at chatsworthhistory.com](http://chatsworthhistory.com)

## The Story of a Great Tunnel

By ROBERT CHARLTON

*Photographs by the author*

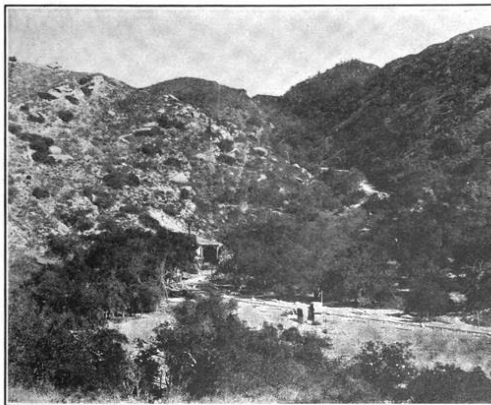
## The Story of a Great Tunnel

By ROBERT CHARLTON

*Photographs by the author*

*The Santa Susana tunnel, which was begun July 16, 1900, completed August 18, 1903, and through which the first train ran March 20, 1904, is nearly a mile and a half long, and is by considerable odds the longest tunnel on the Pacific coast. Indeed, there are but three or four tunnels in the world which exceed it in length. By means of this tunnel a considerable saving is made in distance, grades and time on the Southern Pacific coast line between San Francisco and Los Angeles.*

THE traveler on a railroad on a pleasant, sunshiny day sees a brakeman passing through the car, pausing as he goes to light the lamps. "Long tunnel coming," he says to himself, and awaits with languid interest the temporary extinction of the outer light. Some moments later the train hurls itself into the engulfing blackness, and the anticipatory languid interest of the traveler is increased or diminished according as the tunnel is longer or shorter. Right there, or, at any rate, as the train rushes from the blackness into the white glare of the sunlight, the interest of the average traveler in the matter ceases.



—where one of the longest tunnels in the coast has just been completed

Digitized by Google

- Tunnel 28 not yet completed.
- Before 1904, tracks have not been laid yet.
- The three tunnels are #26 from the Simi side of the pass to Chatsworth at 7,369 feet (1.4 miles), Tunnel #27 at 994 feet, and Tunnel #28, under what is now Topanga, at 599 feet.



West side of Tunnel 28 looking east

# Frederick Charlton

- 1900 Census - At the age of 24, Frederick is an aspiring artist who became an illustrator for the San Francisco Chronicle.
- In 1903 he was engaged to Lenora Johnson McDonald of Chatsworth. Lenora lost her first husband David McDonald in 1901 to tuberculosis.
- Frederick died in the 1906 San Francisco Earthquake.



# Anna Charlton

- Born in 1880, she moved to Chatsworth in probably 1886 at the age of six.
- The picture at right was taken about 1890 when Anna was 10 years old
- In 1899 Anna died of pulmonary tuberculosis when she was 19.



About 1890: Emma Johnson Graves with friends Anna Charlton, Bessie Groendick. Source: Bruz Johnson Slides

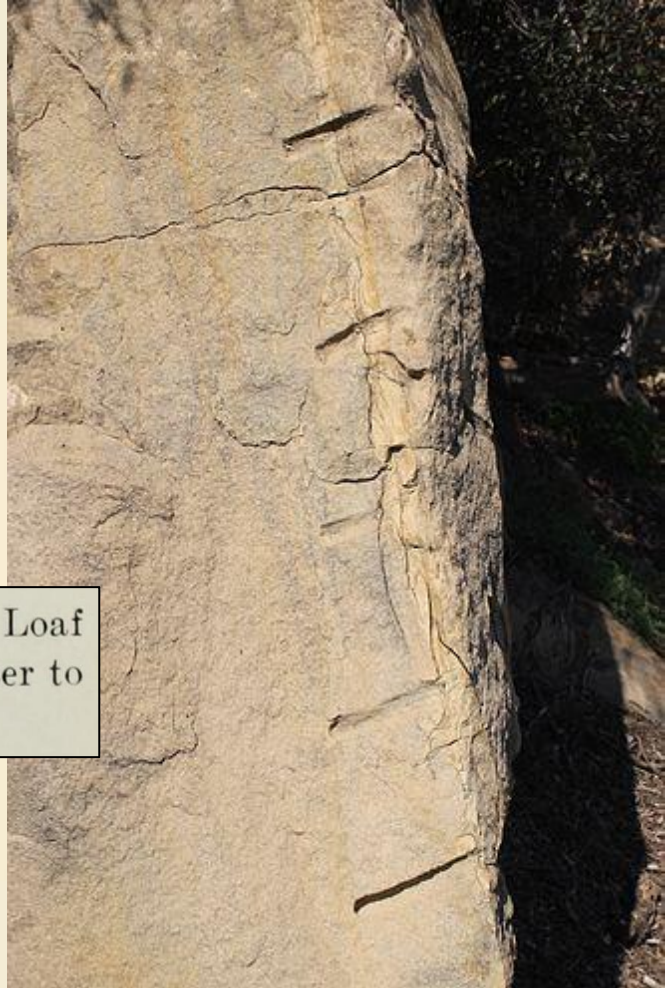
# Oliver Charlton

- In 1906-1915, George Charlton's son Oliver operated the Charlton quarry on the Charlton homestead. Oliver hired William Bannon, who had moved to Texas, to work his quarry. *(source: 1974 Bannon/Hinkston interview)*
- The quarry work was on the east side of Stoney Point.
- Oliver Charlton called the quarry “**Sugar Loaf Hill**”

O. A. Charlton, in Sec. 7, T. 2 N., R. 16 W., S. B. M., on Sugar Loaf Hill, has quarried some boulders of sandstone similar in character to that in the other quarries near Chatsworth.

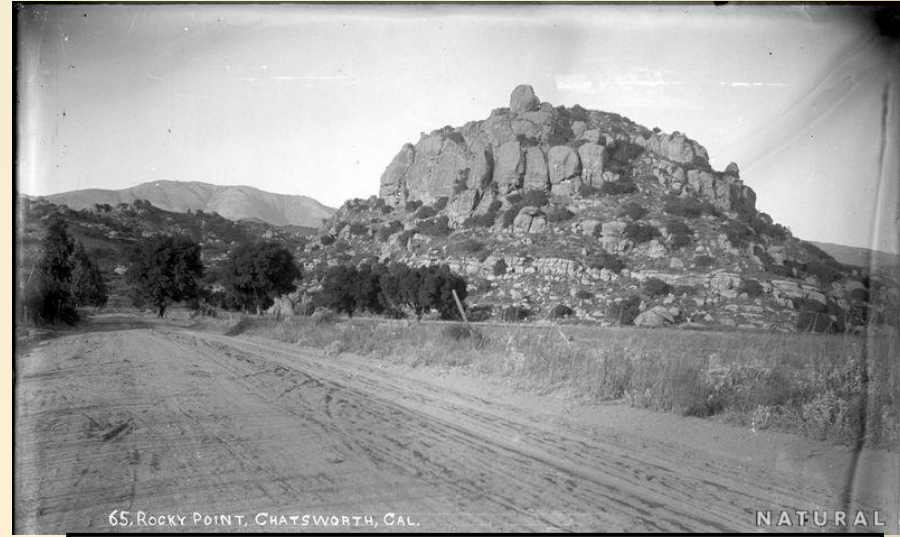
Source above: 1906 State Mining Bureau pg. 130

At right: Stoney Point Wikipedia Charlton quarry remnants.



# The Seven Names for Stoney Point

1. Momonga (1,000 B.C.)
2. 1797 - Ranchería de las Piedras (“Village of the Stones”, Mission San Fernando registers)
3. 1873 - Castle Rock? (per a 1948 Tiburcio Vasquez story, plus a 1935 postcard)
4. 1906 – Sugar Loaf Hill (Charlton Quarry)
5. 1912 – Rocky Point (Postcard)
6. 1927-65 – Stony Point (1927 Stony Point Rancho, 1948 4<sup>th</sup> of July BBQ at Stony Point)
7. 1951 to today – Stony Point (1951 Alward’s Stony Point Service, 1965 Stony Point Ranch, 1982 Stony Point Park)



An early photo of Stoney Point, labeled “Rocky Point” on a [1912 Postcard](#)

Source: 1906 State Mining Bureau pg 130

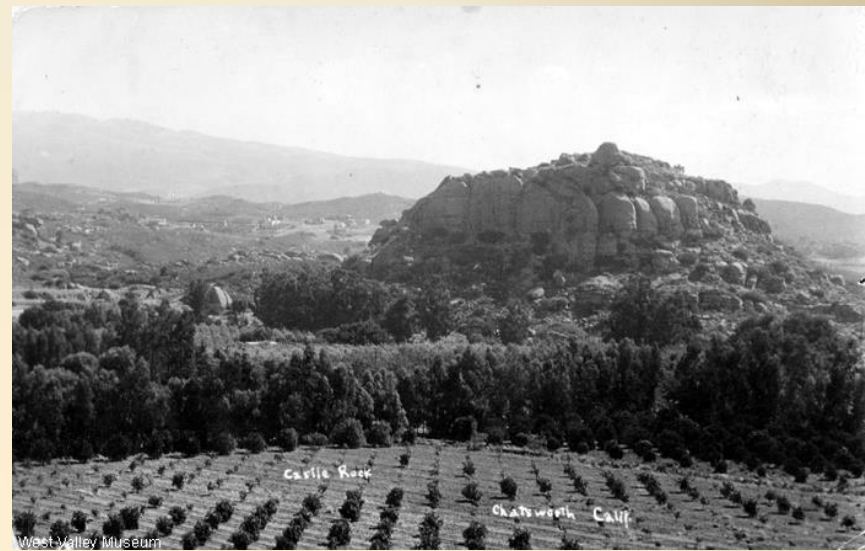
O. A. Charlton, in Sec. 7, T. 2 N., R. 16 W., S. B. M., on Sugar Loaf Hill, has quarried some boulders of sandstone similar in character to that in the other quarries near Chatsworth.

# Was Stoney Point once called Castle Rock?

There are two references to Stoney Point being called Castle Rock.

1. To the right is a circa 1935 postcard identified as Castle Rock.
2. The Santa Clarita Valley posts a 1948 Tiburcio Vasquez article that describes Stoney Point as Castle Rock (link below)

<https://scvhistory.com/scvhistory/vasquez-thrall.htm>



The SCV History Webmaster makes a note that the 1948 article is “wildly incorrect”.

In reading the passage regarding Castle Rock, although the location description is correct, the discussion of an adobe Indian village in 1873 describes Bell Canyon and Rancho El Escorpion. And that is where **Castle Peak** is. The article discusses a loft in an adobe still standing in 1900, which again fits Castle Peak, not Chatsworth.

A thought is that the 1935 post card is mislabeled. And the author of the 1948 article confused Stoney Point with Castle Peak.

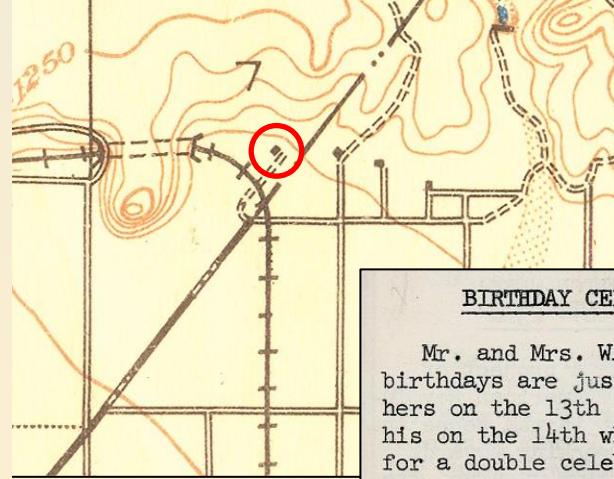


## Later residents at the Charlton Residence site

The Charlton's house, circled in red in 1903, was at today's DNA Prep Academy.

- 1917 – A brush fire - “The owners lost their house and almost a hundred hives of bees.”
- 1958 – owned by Walter Lohman, realtor, address is 21521 Mission Road. 55 acre stock and citrus ranch, pool, ranch house.
- 1973 – Owned by Leon Fenwick, called “The Ranch Club” summer day camp, 21523 San Fernando Mission Road.
- 1981 – it became Chatsworth Hills Academy.
- 2020 – DNA Prep Academy owns the 16 acre campus, at 21523 Rinaldi Street.

An article in the 1955-09-01 Chatsworth Grapevine mentions the Lohman's birthday party at their “Pilitas Ranch”



### BIRTHDAY CELEBRATIONS

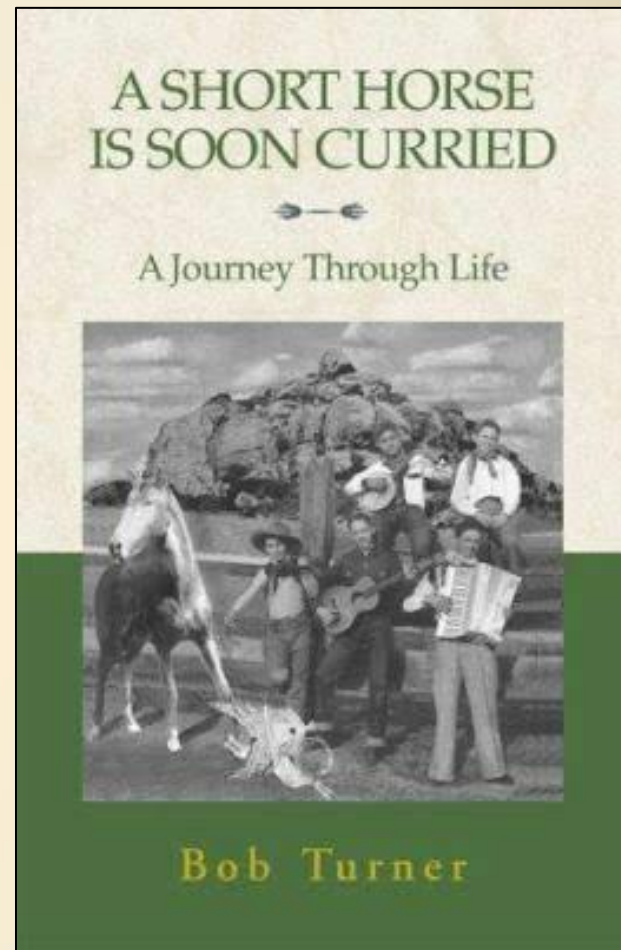
Mr. and Mrs. WALTER LOHMAN'S birthdays are just 24 hours apart - hers on the 13th of August and his on the 14th which was cause for a double celebration at their Pilitas Ranch on Sunday. Lohman says he's managing to keep up with Jack Benny - he's now 39.

Swimming and barbecued filet steaks and all the trimmings were the order of the day, enjoyed by Mssrs. and Mmes. Hutchinson of Rim Rock Ranch, Lou Vollmers of 10949 Andora, the Arthur Herpol-sheiners from Northridge Estates and Bob Dennis.

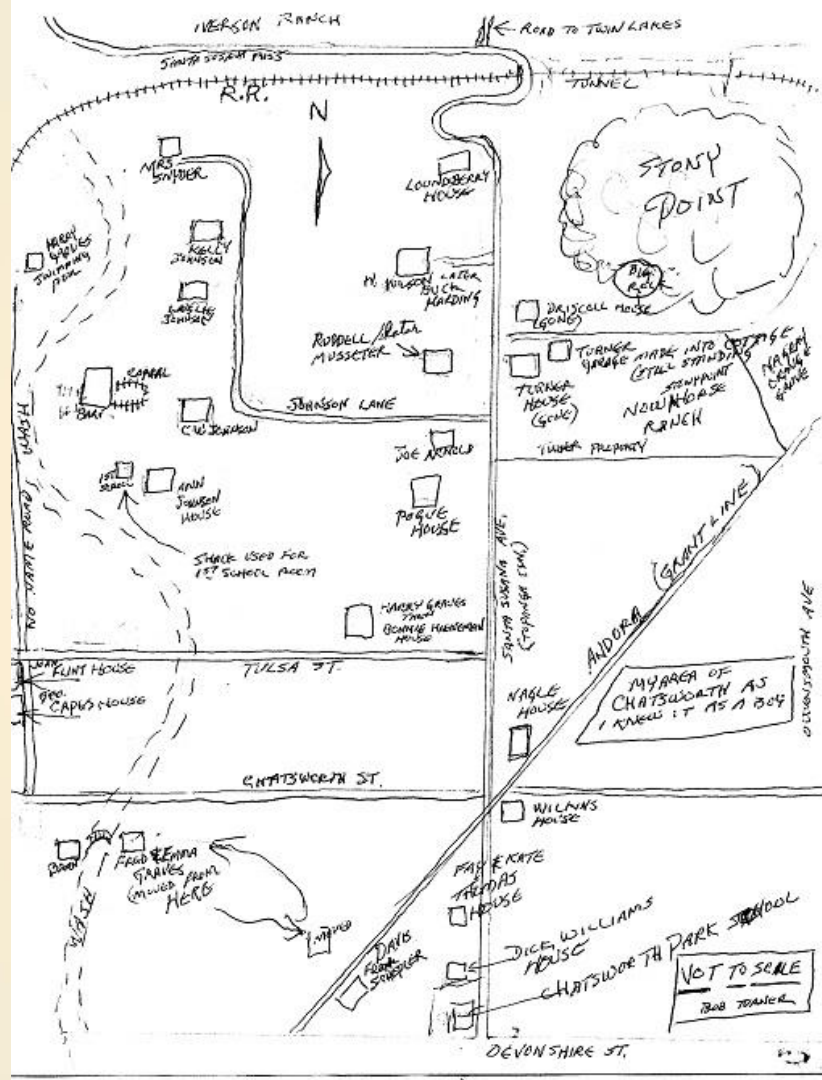
The Lohmans are enjoying a leisurely vacation - spent four days down at Del Mar, returning in the evening of August 21st, with the thrill of having won on a couple of long shots. Last week they spent a couple of days at Catalina.

**Stoney Point  
1920's residents –  
Driscoll, Turner, Haworth,  
Wilson, Johnson**

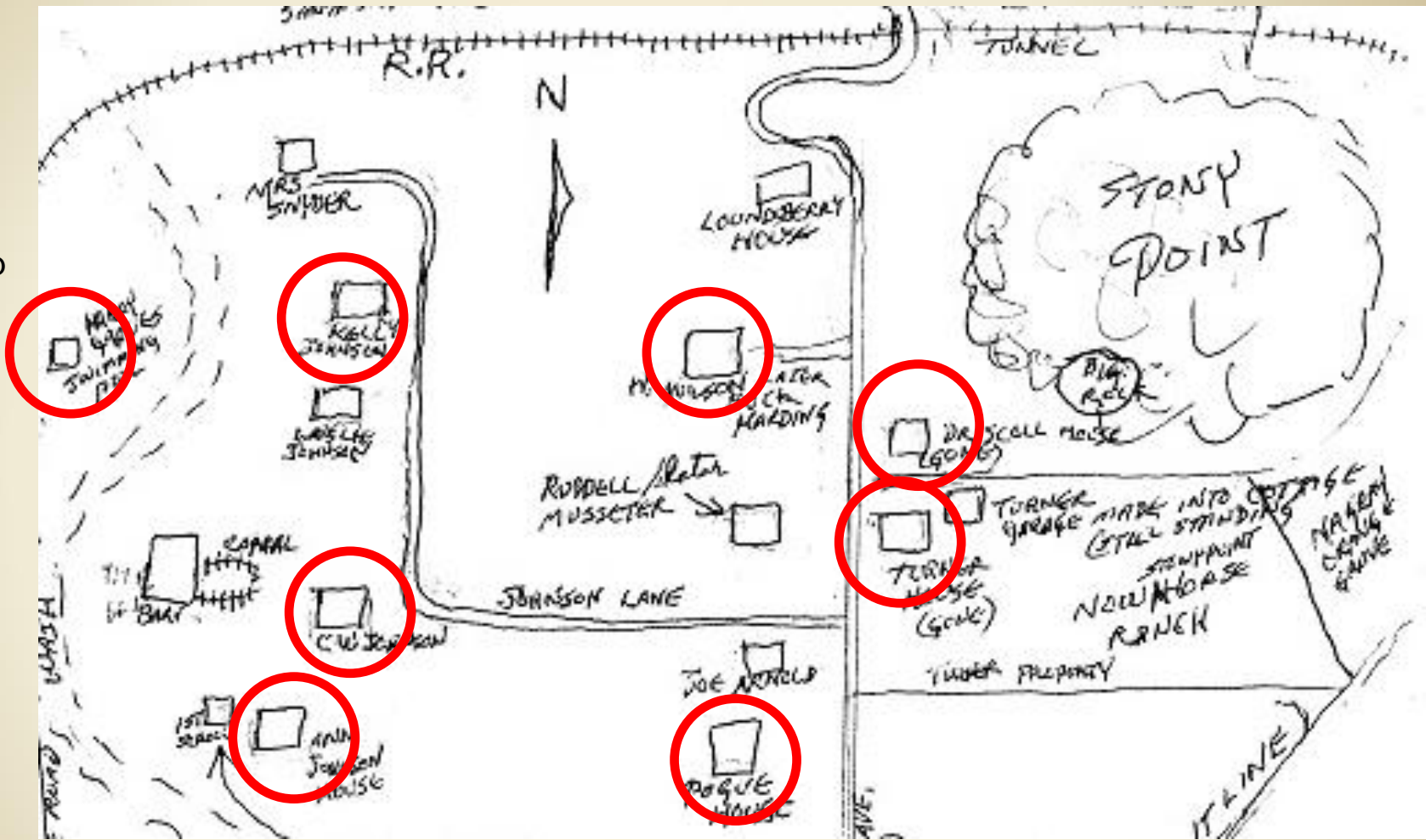
- Bob Turner was born in 1919 in Chatsworth California. He wrote a book in 2000, “A Short Horse is Soon Curried”
- His family moved to Chatsworth in 1913, and lived at the base of Stoney Point on 10 plus acres. Which is today’s Stoney Point Ranch, and Ride on Therapeutic.
- During Prohibition (1920-1933), their entire 10 acres was planted to grapes, as people were allowed to make their own wine, they also sold crates of grapes. Later they planted walnut trees.
- His mother Marie was appointed Postmaster in 1944.

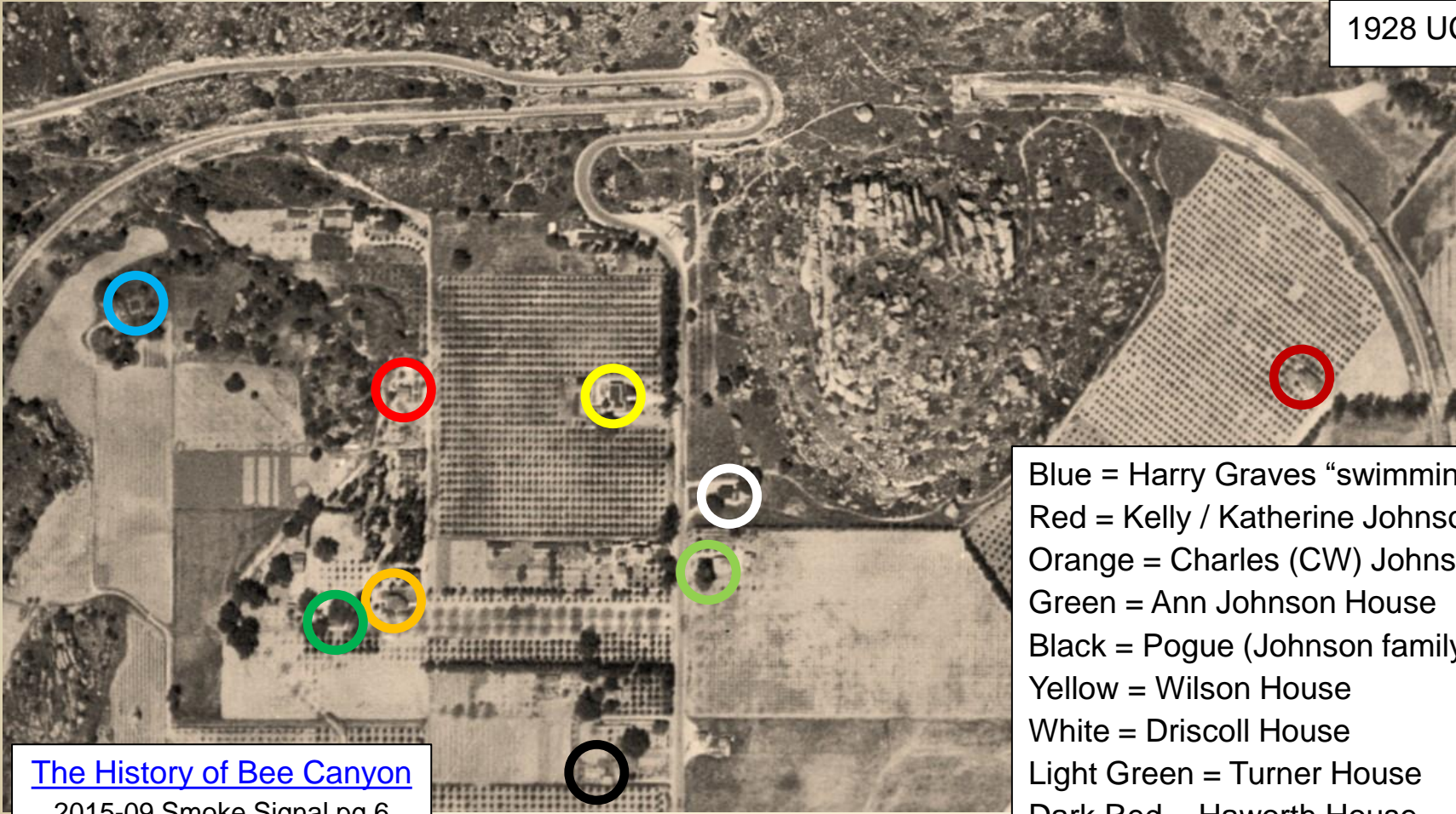


- In 2006, Bob Turner corresponded with Ann Vincent at the Historical Society, and sent her this map he sketched of the area from his childhood memories.



A closer look –  
Identifying  
8 homes  
on the map





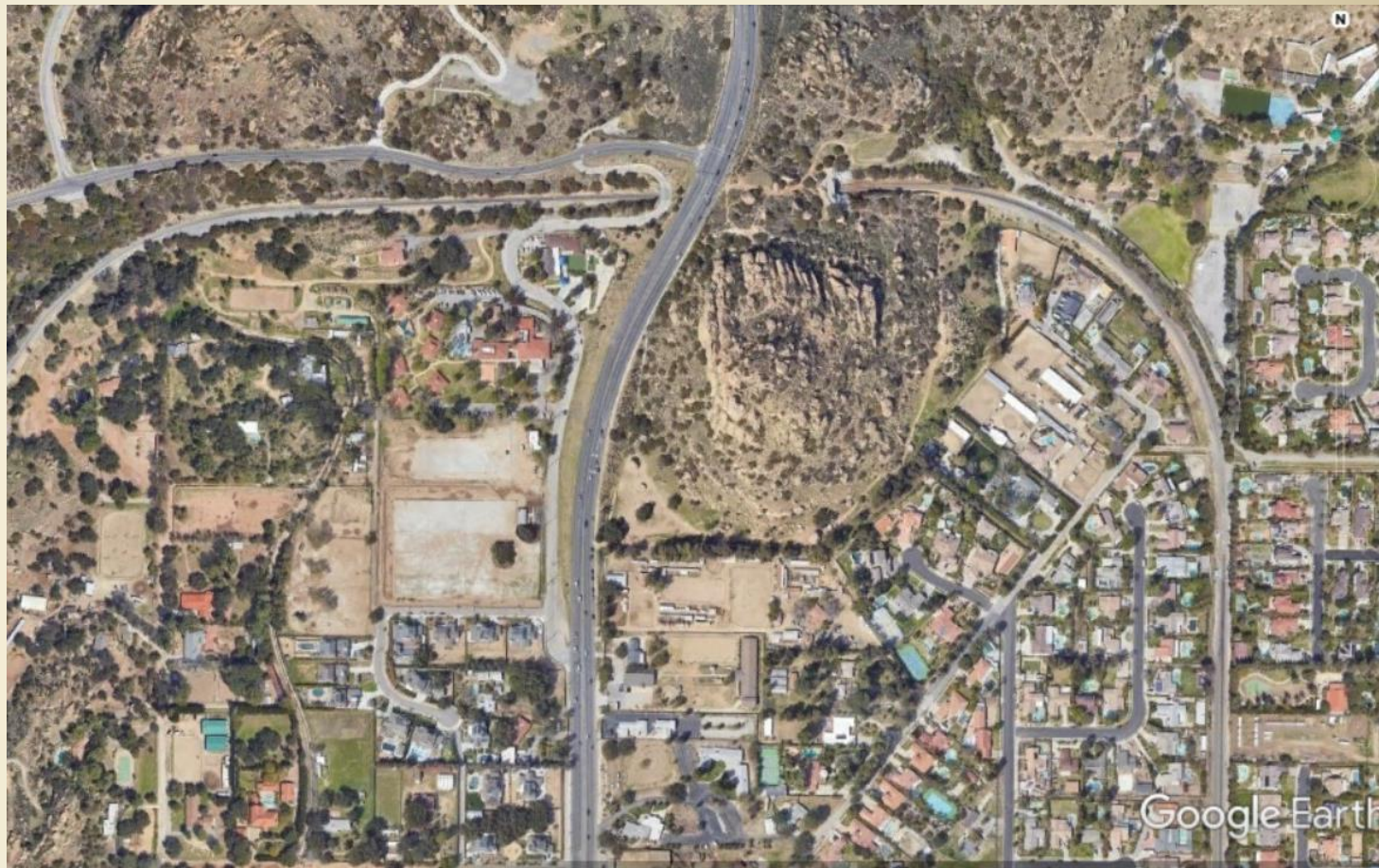
Blue = Harry Graves “swimming pool”  
 Red = Kelly / Katherine Johnson house  
 Orange = Charles (CW) Johnson house  
 Green = Ann Johnson House  
 Black = Pogue (Johnson family)  
 Yellow = Wilson House  
 White = Driscoll House  
 Light Green = Turner House  
 Dark Red = Haworth House

[The History of Bee Canyon](#)  
 2015-09 Smoke Signal pg 6

Note:

The 1966 Topanga extension to the 118 fwy resulted in building up the grade of the “new” Topanga west of Stoney Point.

And eliminating the large open area to the southwest of Stoney Point, that had been a gathering and parking spot.



Google Earth 1920 imagery today

Circa 1918  
Ann Johnson  
house  
view north east





1918 Henry  
Wilson's  
home

10921 Santa  
Susana Pass  
Road

An article on  
the Wilson  
family is in the  
[Nov 2016  
Smoke Signal  
Newsletter](#)



1920-04-11 Sierra  
Club group at the  
Wilson House --  
10921 Santa Susana  
Source: Facebook  
SFVTN

Editors Note:  
When Topanga  
was elevated to  
meet the 118 fwy in  
1966, today's Old  
Santa Susana  
Pass Road was  
moved westward  
125 ft.

## 1920 Looking South On Topanga Stoney Point is on the left



**1948 – 1950**  
**4<sup>th</sup> of July Parade and BBQ at**  
**Stoney Point**

**Sponsored by the Chatsworth**  
**American Legion Post 622**

# 1948 - 1<sup>st</sup> Annual American Legion July 4<sup>th</sup> Parade and BBQ at Stony Point

- Post members and other men in the community are growing crops of whiskers to give the event the flavor of the “Old West”
- A parade at Owensmouth and Devonshire will lead off the celebration, followed with a BBQ, vaudeville program and other activities.
- The film “Sutter’s Gold” will be shown that evening.

**Chatsworth Legion Backs Fete July 5**

Chatsworth today is preparing for a gala celebration at Stony Point July 5 under sponsorship of the Chatsworth American Legion post.

Post members and other men in the community are growing crops of whiskers to give the event the flavor of the “Old West.” Committees are lining up both operators and preparing for a queen contest.

A parade will lead off the celebration. During the afternoon there will be a barbecue, vaudeville program and other activities. The film, “Sutter’s Gold,” will be shown that evening.

Proceeds from the affair will go into the Legion’s community building fund, according to Irvine Alward, Legion publicity chairman for the celebration.

1948-05-08 The\_Valley\_Times

# Legion To Hold Variety Show

A vaudeville program featuring a wide variety of acts will be presented as part of the Fifth of July American Legion carnival being staged by the Chatsworth Legion Post at Stony Point.

The acts will include song and dance soloists and groups, puppet show, a band, an animal act, and impersonators.

Some of the performers are Janet Dee and her Santa Monica Surf Board Girls, Jimmie Dale, Dugan Frederick, Lila Kress, Betty Moore, Danny Cook, Rodney King, Joan and Sally Alexander, Lawrie Harper, Billy June Davidson, and L’il Doug.

The celebration starts with a parade, which will form at the corner of Owensmouth and Devonshire at 10 a.m. Scores of horsemen have indicated their intention of participating in the procession.

A barbecue will be served at the Stony Point grounds after the parade.

During the evening the film “Sutter’s Gold” will be shown. Proceeds from the carnival will be added to the Legion post’s community building fund.

1948-06-24 The\_Valley\_Times

# 1948 - 1<sup>st</sup> Annual American Legion July 4<sup>th</sup> Parade and BBQ at Stony Point

Barbecue Queen Margie Falk  
at Stony Point



**CHATSWORTH IN YESTERYEAR**—Barbecue Queen Margie Falk ruled over a right lusty band of “sourdoughs” at Frontier Day and Carnival celebration staged Monday by Chatsworth Post 622, American Legion, as evidenced by these Legionnaires garbed and bearded in the manner of Early California. First row from left are John Tyner, James Williams and Frank Parks. Second row: Lewis C. Mahaneffy, Past Commander Romeo Tognazzini, Queen Margie, Lou Pierce and mount, Timmy Babe; T. H. Thode and Gordon Watts. Famous Chatsworth rock-girt hills form typical western background for scene.

Betty Ross Clarke photo

1948-07-08 The\_Van\_Nuys\_News

## 1949 - 2nd Annual American Legion July 4<sup>th</sup> Parade and BBQ at Stony Point

- Parade from Owensmouth and Devonshire to Stony Point, for a barbeque and carnival.
- At the barbecue, guests will consume meat and beans prepared and seasoned 24 hours before in a rock pit. "Uncle" Fred Graves will be in charge of this phase of the operation.

1949-06-27 The Van Nuys News and Valley Green Sheet

## Colorful Parade Leads Opening of All Day Celebration on July 4

It will be a gala Fourth of July in Chatsworth.

That was the promise of American Legion Post 622 officials today as they smoothed out final details for their second annual parade and barbecue.

Inaugurated last year, this year's affair will be twice as colorful and twice as big, officials declared.

Parade participants, who will start their march from the intersection of Owensmouth Ave. and Devonshire St. at 11 a.m., will file through Chatsworth streets until noon, when paraders and spectators will assemble in Stony Point

## MOUNTAIN PATROL CHIEF IS ASSIGNED

Seriousness of the fire hazard in mountain areas has resulted for the first time in placing a battalion chief in the mountain patrol district, Fire Dept. headquarters announced today.

Park at the foot of Santa Susana Ave. for a barbecue and carnival.

At the barbecue, guests will consume meat and beans prepared and seasoned 24 hours before in a rock pit. "Uncle" Fred Graves of Chatsworth and Hank Wertz of Newhall will be in charge of this phase of the celebration.

To cap the day's festivities, an Army Air Force film will be screened that night by S/Sgt. George A. Lampson.

### Colorful Parade

Leading the parade, to form ranks a half hour before starting time, will be a color guard followed by the post and auxiliary banners, Grand Marshall Max P. Schonfeld and, in a horse-drawn surrey, the queen of the barbecue and her two princesses.

Paced by a large marching band, Boy Scout Troop 26, Cub Pack 226 and Girl Scout Troop 81 will follow. Then, in approximate order, will proceed Ray Leslie's Major-

Continued on Page Four

## CHATSWORTH POST READIES FIREWORKS

Continued from Page One  
ettes; Bud DuBrock's Dun-Rovein Saddle Club contingent; a cart drawn by Great Dane dogs raised and bred by Mrs. Betty McLean; the Thelma Arrington riding group; the Chatsworth Junior Riders, led by Shirley McElvain, flag bearer; and a stage coach piloted by movie stunt man Bud Hooker and carrying Charles Holt, president; Griff McKeeby, secretary, and Russell McElvain, treasurer of the Chatsworth Chamber of Commerce.

Finally, bringing up the rear, Paul Gaskins astride his famed Palomino; the Northridge Mounties, sponsored by the Chamber, a senior group led by Jack Mather Jr., son of the Cisco Kid, and a junior group paced by Rusty McFarland; a fire truck driven by Fireman Tracy Hughes; the Valley Mounted Reserve Corps, headed by Officer Pat Murphy; numerous individual horsemen, Guitarists Jim Lohse and Bert Allegetti and, as point guard, Roy Hepner atop a stage coach drawn by Palominos.

Judges of the parade entries are to be Judge David E. Fulwider, Howard Petrie and Elwood Pickering. Ribbons will be awarded all paraders, and prizes are in store for the top entrants.

## 1950 – 3rd Annual American Legion July 4<sup>th</sup> Parade and BBQ at Stony Point

A Parade, Band Concert and Barbecue will spark the day-long event.

1950-05-24 The\_Valley\_Times

## Legion Plans 4th Fete In Chatsworth

An old-fashioned Fourth of July celebration will be held in Chatsworth under the sponsorship of the American Legion.

A band concert, parade and barbecue will spark the day-long event.

Hank Wertz, veteran barbecue expert of Saugus, will prepare the meat.

Chairman of the annual observance is Lew Wallace, who announced the public is invited to attend the celebration at Stony Point Park on Santa Susana Pass.

# 1949 or 1950 4<sup>th</sup> of July Parade and BBQ at Stony Point

- In 1996, Edwin Iverson gave a Slide Show Presentation to the Chatsworth Historical Society.
- A part of that presentation were slides of the 1949 or 1950 Parade and Barbecue at Stony Point.
- A six minute video clip of that presentation is available at <https://youtu.be/2tL3obqvMYk>
- A few screenshots of that slideshow are shown in the next few slides.



The queen of the barbecue and her two princess turn north on Santa Susana (Topanga) from Devonshire St.



# 1949 or 1950 4<sup>th</sup> of July Parade and BBQ at Stony Point



American Flag above the  
4<sup>th</sup> of July festivities.



Carnival/event grounds at Stony Point, photo taken looking west from the top of Stony Point.  
Notice that it is all flat, and cars are parked on Topanga Canyon Road.

# 1949 or 1950 4<sup>th</sup> of July Parade and BBQ at Stony Point



BBQ  
pit 1



BBQ  
pit 2



Barbeque pit 3. Notice the trunk winch lifting the BBQ rack.

# 1965 – Graffiti Cleanup

- In 1965 the Chamber of Commerce coordinated a weekend cleanup of graffiti.
- They used three sandblasters, and over 200 volunteers brushing on paint remover, and washing it off with fire extinguishers filled with water.
- It was only partially effective.

Corman said the contracts being compiled by his office, which will provide employment for 3,000 workers.



**ORGANIZED**—Bruce Pegg, left, Chatsworth Chamber of Commerce president, and Ray Moon, Pacific Telephone Co. foreman, test communication equipment for a weekend campaign to rid Stony Point of paint sprayed on rock by vandals.

## PAINTED BY VANDALS

# Stony Point's Face to Lose Its Makeup

**CHATSWORTH** — Two hundred volunteer conservationists this weekend plan to reveal the true face of Stony Point — the face it had for centuries before the arrival of people with spray paint.

Led by the Chamber of Commerce, the group will set to work Saturday at 7 a.m. on the defacement that the rocky point has received in recent years.

The volunteers will include the cleanup crew, service club women who will serve refreshments, Boy Scouts to police the area for rubbish and a variety of others necessary to the operation, according to chamber president Bruce Pegg.

### Sand Blasters

The workers will be armed with three sand blasters for the lower areas and buckets of liquid paint remover for the higher areas, said Pegg.

Members of 11 local service organizations and 12 other groups from outside Chatsworth, the volunteers have been armed by the chamber with 20 tons of sand for the blasters and 150 gallons of paint remover.

Police will patrol the area to keep onlookers out of the immediate work area.

The chamber president said mountain climbers have volunteered to do the high work. They will brush the paint remover on the slogans, names and other scribbles painted on the rocks and then wash the paint and the remover off with portable fire extinguishers (loaded with water) donated by the fire department.

The sand blasters will reach up to the 300-foot level, Pegg said. Powerful compressors will be located at the base of the point and pots of sand will be carried up to the 200-foot level.

Pressure hoses will run through the sand pot and up another 100 feet to where volunteers will be wielding the nozzles, he said.

### Contributions Asked

He added the Chamber of Commerce is appealing for contributions to help take care of the \$700 spent by the chamber on equipment for the project.

Contributions can be mailed to the chamber at P.O. Box 134, Chatsworth, Pegg said.

# 1966 – Topanga extension to the 118 Fwy

- From the top of Stoney Point looking north.
- Mayan Drive to Twin Lakes is still in use.
- Notice freeway buildup to the upper right.
- The Topanga grade west of Stoney Point was raised, widened, and curved right to smooth traffic flow...



# 1974 – Historic-Cultural Monument “Stoney Point Outcroppings”

- In 1974, at the request of the Chatsworth Junior Women's Club, supported by the Chatsworth Historical Society and other local groups, the unusual rock formation was named **Los Angeles Historic-Cultural Monument No. 132** by the Los Angeles Cultural Heritage Board.

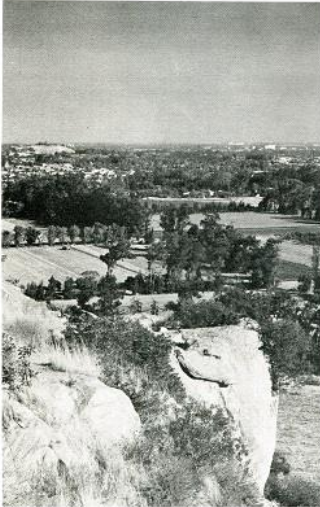
"Stoney Point is one of the most picturesque areas in Los Angeles and has been considered one of the treasures of the Chatsworth community," said Dr. Carl S. Dentzel, Cultural Heritage Board president. "As a landmark, this unique area evinces development from prehistoric times until today."

1975-06-15 LA Times


# 1975 – Efforts to become a City Park

- Starting about 1975 the Chatsworth Historical Society was agitating for the land to become a city Park.
- The 1975 Red Carpet realtor brochure at right advertised a price of \$280,000


## STONEY POINT



A HISTORICAL LANDMARK KNOWN AS THE NORTHWESTERN POINT OF THE SAN FERNANDO VALLEY SINCE THE DAYS OF THE PIONEERS.




Stoney Point itself shown from the south face looking north.



Stoney Point consists of approximately 20 acres of land — the point itself rises about 200 feet above the surrounding area and offers an unobstructed view of the entire San Fernando Valley as well as three mountain ranges. The top consists of approximately an acre of reasonably flat land suitable for a theme type restaurant with a magnificent view. Other suitable uses might be shops or a hotel of the Madama Inn type.

An aerial view of Stoney Point taken from the west side with an easterly view of the San Fernando valley with Topanga Canyon Boulevard and Santa Susana Pass Road in the foreground.




It was famous long before the coming of the white man, sheltering as it did, a large Indian settlement at its base. Next, it was the landmark looked for by the padres from San Fernando Mission as they started their trek that would take them over the Santa Susana Pass and through the Simi Valley to San Buenaventura Mission. It sheltered the home of the first American Homesteader, where the first blue eyed American child was born in the San Fernando Valley almost a century ago. Even to this day it is marked and named on most government maps.

Large crevices in the "point" could be easily converted into a road to be used for deliveries by trucks. For your patrons: A cable car ride from the parking area would add to the charm of the site as well as give that "away from it all" feeling.

The location of the offering is on Topanga Canyon Blvd., adjacent to the Simi Valley Freeway, but still in Los Angeles City limits makes this the most desirable investment in the rapid growing San Fernando Valley. You will be buying a landmark that was famous before history, was written or it even appeared on any map.

**\$280,000**

For Further Information Contact:  
**(213) 882-6840**

  
**RED CARPET**  
REALTORS

21758 Devonshire Street, Chatsworth, California 91311

TRICIA PLUCKNETT Res. (213) 341-2008  
or RAY BARTON Res. (213) 765-5662

# 1975 – Efforts to become a City Park

- The Brochure suggests a theme restaurant at the top, and a cable car ride from the parking area.

Selections of the 1975 Red Carpet Realtor brochure below

Stoney Point consists of approximately 20 acres of land – the point itself rises about 200 feet above the surrounding area and offers an unobstructed view of the entire San Fernando Valley as well as three mountain ranges. The top consists of approximately an acre of reasonably flat land suitable for a theme type restaurant with a magnificent view. Other suitable uses might be shops or a hotel of the Madonna Inn type.

Large crevices in the “point” could be easily converted into a road to be used for deliveries by trucks. For your patrons: A cable car ride from the parking area would add to the charm of the site as well as give that “away from it all” feeling.

# 1982 – 22 acre Stoney Point becomes a City Park

- The city purchases Stoney Point for \$250,000, with Councilman Hal Bernson taking the lead in sheparding the Park through the City Council.
- It is undeveloped, and the city plans to leave it that way.
- “It’s the only park of its kind in Los Angeles”. “The attraction is mainly to climbers, but I wouldn’t have followed through unless I felt it was needed by the community.”

1982-06-06 LATimes

## *City Put in a Hard Spot— Purchases 300-Foot Rock*

By CHARLES P. WALLACE, *Times Staff Writer*

Standing in the shade of an oak tree on a neighbor's dusty flatlands, Los Angeles officials Saturday inaugurated the city's newest park—a 300-foot high rock in the San Fernando Valley for which the city paid \$250,000.

The rock, known to residents of surrounding Chatsworth as Stoney Point, is a favorite spot for mountain and rock climbers because of the sheer cliffs on its front surface.

The 22-acre rock, actually an outcropping of rock with a massive boulder perched precariously at its summit—a profile familiar to devotees of early Western films—is undeveloped and the city plans to leave it that way.

Prodded by the Sierra Club and community groups, the city had been considering the purchase for five years. City Councilman Hal Bernson, who represents the area, took the lead in shepherding the Stoney Point Park through the City Council.

“It’s the only park of its kind in Los Angeles,” Bernson said after ceremonies at the rock Saturday to open the park. “The attraction is mainly to climbers, but I wouldn’t have followed through unless I felt it was needed by the community.”

The park is not without controversy, though. For one thing, the amount the city paid, \$250,000, was \$110,000 more than the original owners had demanded for it.

The Department of Parks and Recreation and the city attorney's office were against the park, which is in the extreme

**Please see BOULDER, Page 4**



# 1982 – 22 acre Stoney Point becomes a City Park

- The mayor vetoed the purchase in 1981 because he felt that the city would be subject to numerous lawsuits from people injured while climbing the rock.
- A city attorney states that a section of the state's government code prohibits lawsuits arising from "unimproved property in its natural state."

1982-06-06 LATimes

## BOULDER: City Buys 22-Acre, 300-Foot Rock

### Continued from First Page

northwest corner of the San Fernando Valley near the end of Topanga Canyon Boulevard.

Mayor Tom Bradley vetoed the purchase in 1981 because he felt that the city would be subject to numerous lawsuits from people injured while climbing the rock. The City Council, led by Bernson, overruled Bradley.

A Parks Department official who asked for anonymity called the new park a "hunk of rock."

"Why are we spending money on something that will benefit only a small group of people when there is no money for other projects that serve many more people?" the official asked.

The price tag for the rock left others mad. When the city decided to buy the rock in 1979, a city appraiser put the value at \$95,000. William F. Schepler, who was then one of the owners, said in a letter to the city that they wouldn't accept a penny less than \$140,000.

The Department of Parks decided to fight back and had the property condemned by eminent domain, the legal procedure by which governments acquire land for public use. After two years of negotiations and a new appraisal that cost the city \$5,398, the city agreed to pay the new owner, Joseph G. Schurter, a Chatsworth orthodontist, \$250,000.

"It's a shocking price," said Tom Jeter of the Sierra Club, who led the club's efforts to have the rock made public.

"I had no idea it had gone that high," said Bernson, when asked about the rise in cost.

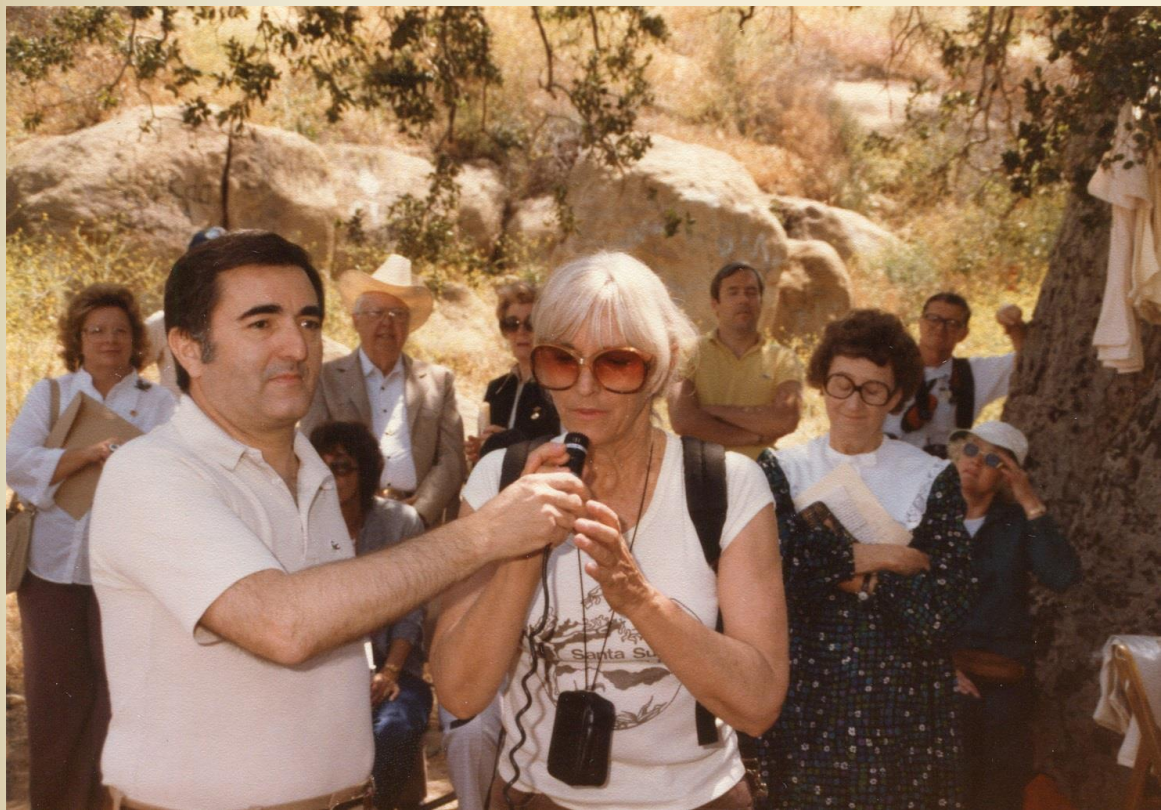
Schurter bristled at the notion the rock had appreciated in the two years. "The city got a gift at \$250,000," Schurter said. "The land around here sells for \$100,000 an acre. They got it dirt cheap."

At one point during the negotiations, it was suggested that if the city failed to come through, the rock might be developed. One proposal called for a trailer park at its base, a funicular railroad to the top and a "theme restaurant" on the summit.

The city's main concern now is the possibility of lawsuits. There have been a dozen accidents at the rock in the last two years, and a 15-year-old boy sued Schurter while he was still owner because of an accident. A climber died on the rock in 1979.

According to Norman Roberts, an assistant city attorney who helped negotiate the purchase of the rock, the city should be immunized against lawsuits by a section of the state's government code that prohibits lawsuits arising from "unimproved property in its natural state." This means that the city can't legally improve the rock in any way, "no toilets can be placed on the grounds, personnel stationed there or paths cut in the land. Officials are considering posting a sign that says "Climb at your own risk," but they fear that might be construed as an improvement.

# 1982 – 22 acre Stoney Point Dedication



Hal Bernson, Jan Hinkston, Virginia Watson

## San Fernando

### Chatsworth

Dedication of the newly acquired Stoney Point Park is set for 10:30 a.m. Saturday, June 5.

Los Angeles City Councilman Hal Bernson will officiate at the ceremonies, which will feature a talk on mountain climbing safeguards by Sierra Club representative Tom Jeter and a walk to the top of Stoney Point led by Jan Hinkston, founder of the Santa Susana Mountain Assn.

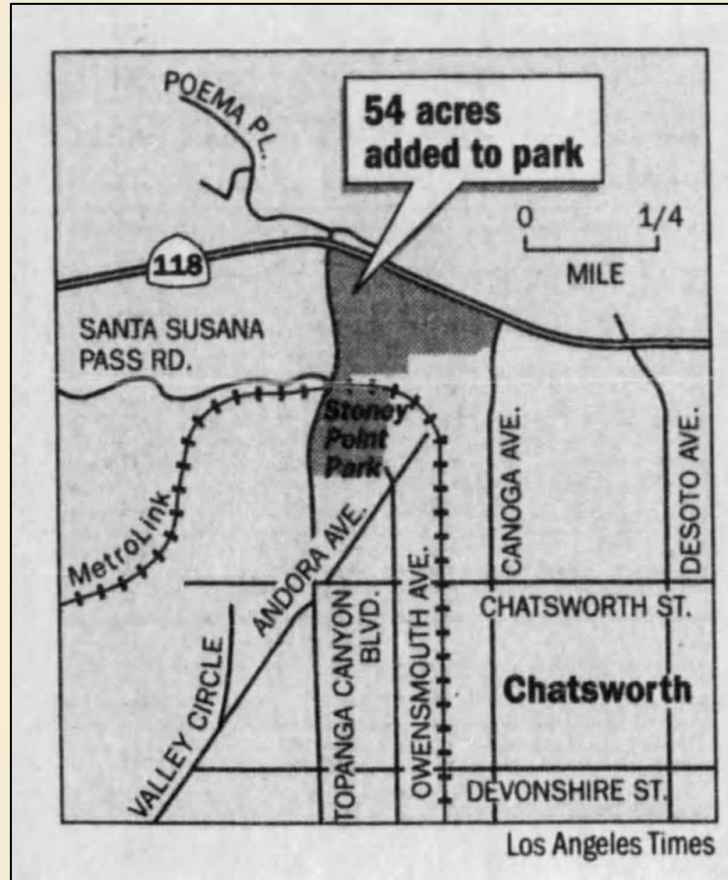
The city last January agreed with Chatsworth orthodontist Joseph Schurter on a purchase price of \$250,000 for Stoney Point.

Stoney Point is on Topanga Canyon Boulevard near the Simi Valley Freeway. The city proposes to keep the 22-acre site in its natural state.

1982-05-27 LATimes

# 1999 – An additional 54 acres are added

Stoney Point Park, long a favorite destination among rock climbers and rappellers, will expand from 22 to 76 acres.



1999-03-05 LA Times

# 2007 – The 5 acre Stoney Point Ranch is added

- In 2007, Councilman Greig Smith, with support from the Chatsworth Neighborhood Council, expanded the park to the south by 5 acres.
- At right, the west parcel in red is 3 acres, and still includes the 1922 Turner garage (later used as a cottage). The east parcel in yellow is 2 acres, and includes a 1954 house built by Jack and Marie Ross in 1954.

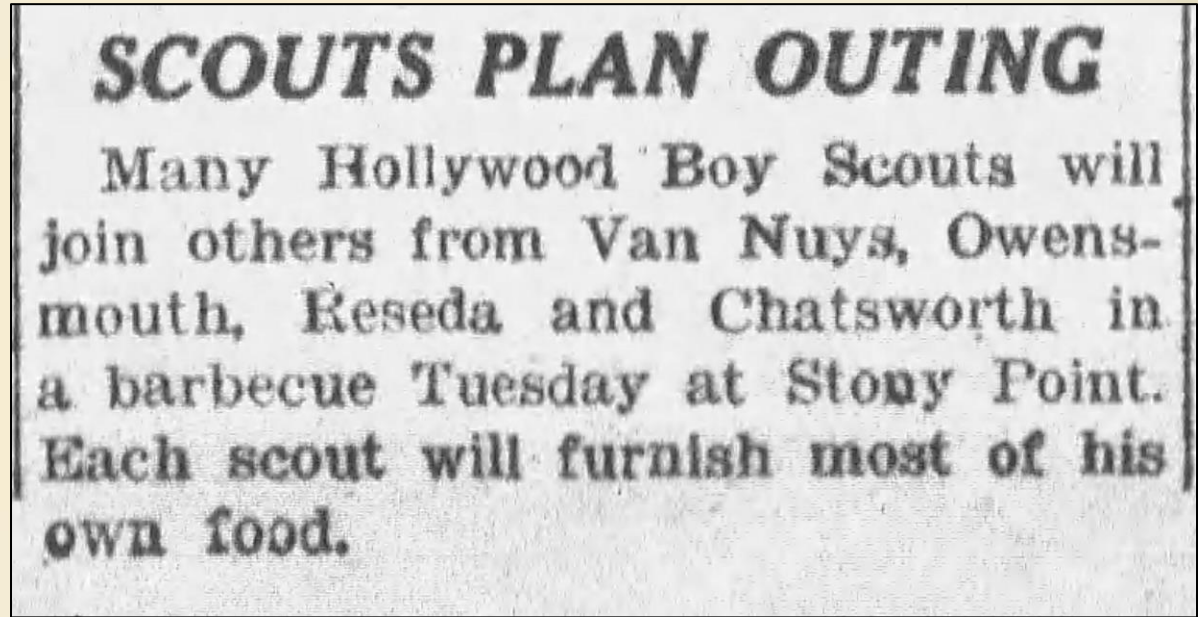


2022 Google Maps

# **Rock Climbing at Stoney Point**

# 1925 Rock Climbing at Stoney Point

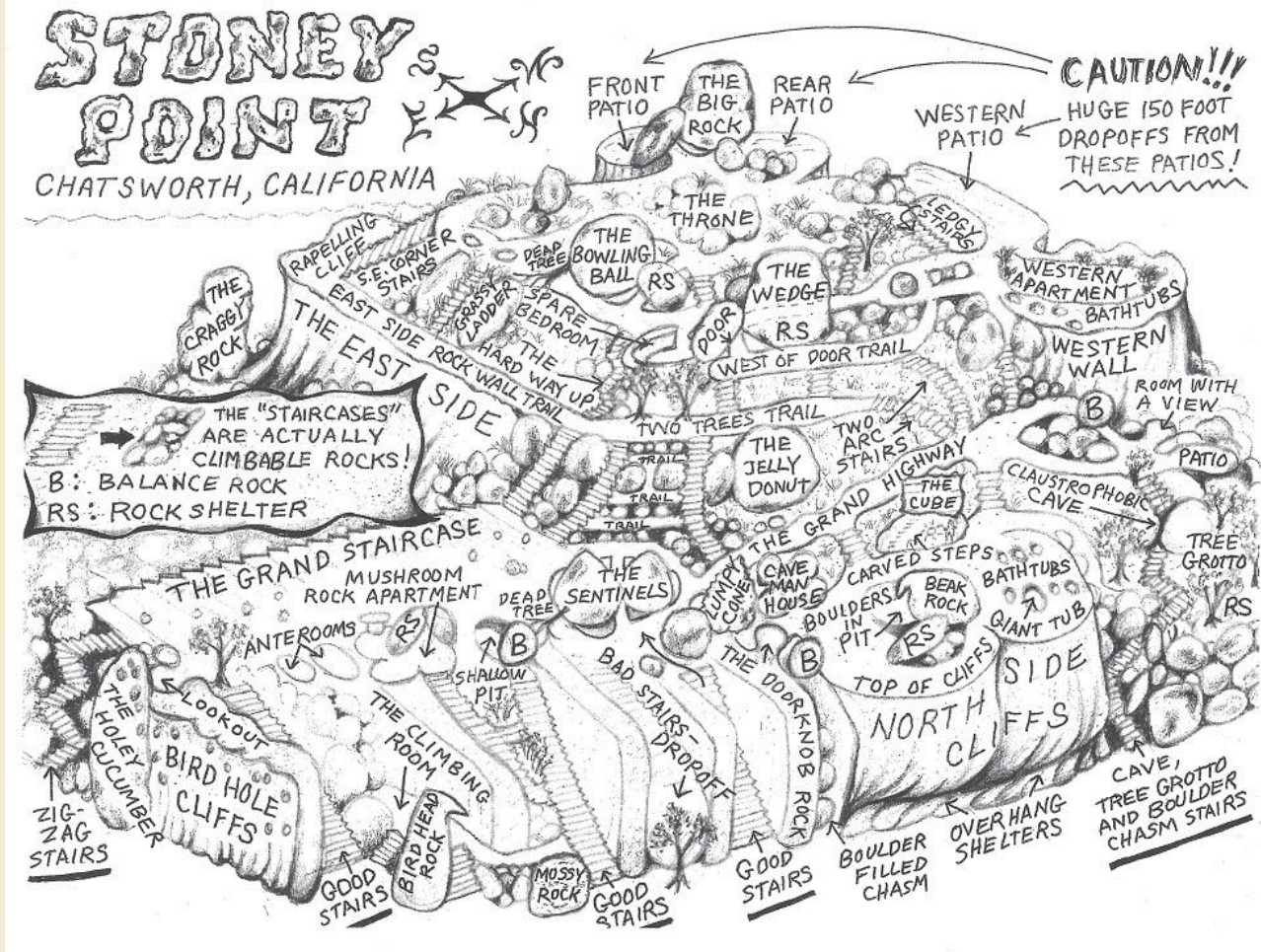
- The earliest record of “Stony Point” in a newspaper article was a Boy Scout barbecue.



1925-06-21 LA\_Daily\_News

# Stoney Point Trails Map

Anonymously mailed to the Historical Society in April 2021.



Next up is a four minute video:

**2012 Stoney Point Documentary  
A Rock Climbing Movie**

Interviewees include: Royal Robbins, Dave Katz, Dimitrius Fitz, Bob Kamps, Mark Frumkin, Jan McCollum, John Bachar, Michael Reardon, Chris Owen, Mike Flood, Guy Keesee

Created by Cole Gibson,  
Half Circle G Productions Joshua Tree, CA

<https://youtu.be/-vowJtje9SQ>





# Films with Stoney Point

Most screen shots courtesy Chatsworth Film Historians

Jerry England - [cowboyup.com](http://cowboyup.com)

and

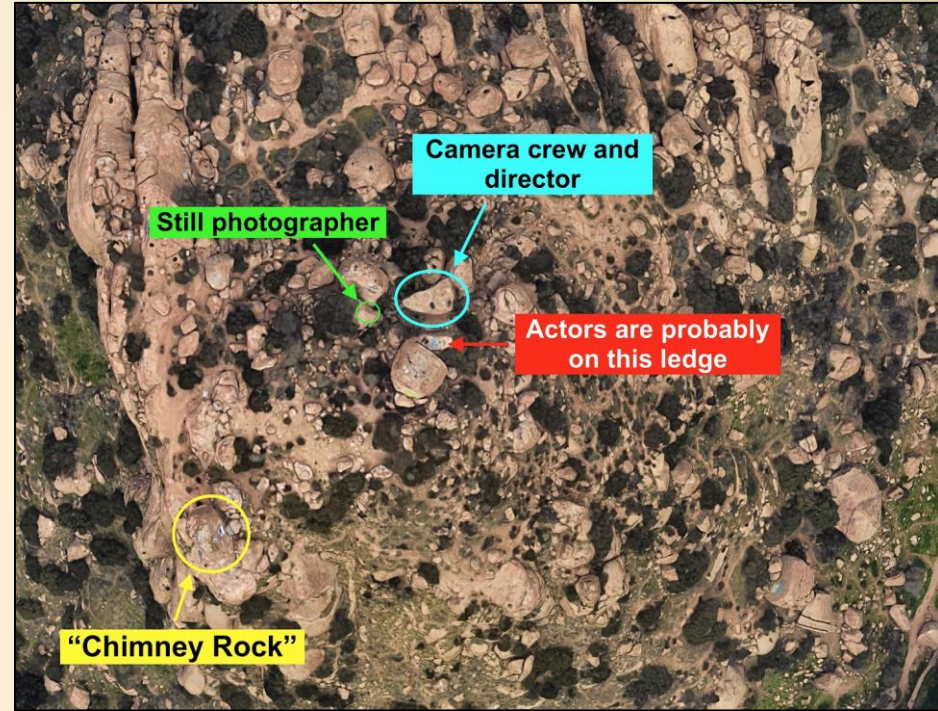
Dennis Liff - [iversonmovieranch.blogspot.com](http://iversonmovieranch.blogspot.com)

# Film with Stoney Point



1916 The Captive God - William S. Hart

# Filmed at Stoney Point



1920s Unknown Christie Comedy - Bison Archives – maybe 1927 Swiss Movements?  
Location drawing – Dennis Liff

## Film with Stoney Point



1926 Tell It to the Marines

## Filmed at Stoney Point



1927 Swiss Movements - Al Christie Comedy  
9m3s chimney rock west side

[https://youtu.be/PmQ\\_oOPP-g0](https://youtu.be/PmQ_oOPP-g0)

## Filmed at Stoney Point



1932 Men of America

## Film with Stoney Point



1936 Ghost patrol starring Tim McCoy

# Films with Stoney Point

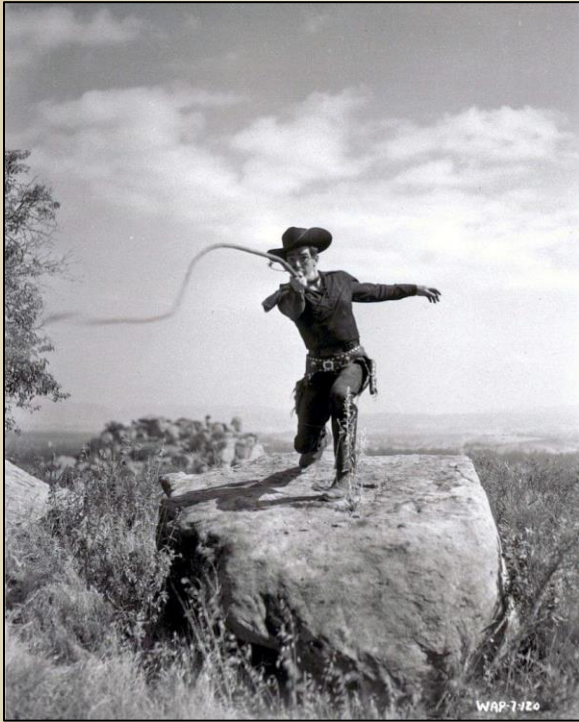


1937 Wee Willie Winkie - funeral sequence



1940 Grapes of Wrath - Promo Shot

# Films with Stoney Point



1940's unknown oater Lash LaRue



1946 Harvey Girls Judy Garland



# Films with Stoney Point



1947 The Black Widow



1948 Superman Serial Ch 3 The Reducer Ray  
Going to Stoney Point to destroy the Reducer Ray

<https://youtu.be/5Kox8jmxdqg>

# Films with Stoney Point



1948 Superman Serial Ch 8 Superman to the Rescue  
Going to Stoney Point to save a train



1950 Superman Serial Ch 1 Superman Flies Again  
Capturing Lex Luthor at his Stoney Point Hideout

<https://youtu.be/qsHt253cgHo>

# Films with Stoney Point



1949 The Big Steal Jane Greer and Robert Mitchum



1949 The James Brothers of Missouri

## Films with Stoney Point



1949 White Heat James Cagney  
the intro pans Chatsworth from Garden of the Gods  
[Chatsworth Railroad movies with White Heat](#)

## Filmed at Stoney Point



1958 War of the Colossal Beast

# Films with Stoney Point



1962 Three Stooges Meet Hercules

# Filmed at Stoney Point (at least the opening scene...)



1993 s5e12 Seinfeld "The Stall"

Elaine's boyfriend, whose face she just loves, takes George & Kramer rock climbing. After his accident, Elaine isn't sure his face will be the same

[https://youtu.be/bYFbLCdyY\\_M](https://youtu.be/bYFbLCdyY_M)

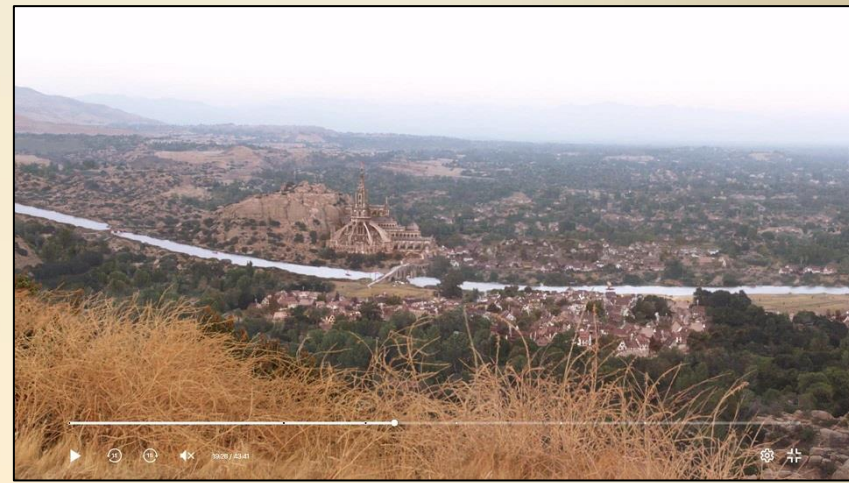
# Films with Stoney Point



2015 James Franco Scion Commercial

<https://www.youtube.com/watch?v=J3i9aowDml0>

# Films with Stoney Point



2017 Orville se1e12 “Mad Idolatry”

Above scene – Bronze Age (Topanga is a river,  
small village)

Upper Right – 14th Century (structure to the right  
of Stoney Point)

Lower Right – Current Age



Next up is a three minute video clip:  
An excerpt from the 1950 Superman  
serial

Chapter 1 – Superman Flies Again

Titled: “1950 Superman Ch 01  
Superman Flies Again Stoney Point  
crop Luthor Hideout”

<https://youtu.be/qsHt253cgHo>



1950 Superman Serial Ch 1  
Superman Flies Again  
Capturing Lex Luthor at his Stoney  
Point Hideout



Next up is a three minute video clip:

An excerpt from Seinfeld

1993 Season 5 episode 12

Titled: "1993 Seinfeld s5e12 George & Kramer Mountain Climbing"

Elaine's boyfriend, whose face she just loves, takes George & Kramer rock climbing. After his accident, Elaine isn't sure his face will be the same

[https://youtu.be/bYFbLCdyY\\_M](https://youtu.be/bYFbLCdyY_M)



The opening scene is filmed at  
Stoney Point



# Sources/Acknowledgements

- Chatsworth Historical Society archives
- [Knight, Albert, 2018 Rock Art at Momonga \(CA-LAN-357\) July 20, 2018 \(available at academia.edu\)](#)
- Most screen shots courtesy Chatsworth Film Historians Jerry England - cowboyup.com and Dennis Liff - iversonmovieranch.blogspot.com
  
- Prepared by Ann and Ray Vincent, May 2022

# Appendix

## Stoney Point Parcels per ZIMAS

	<u>Parcel No./APN</u>	<u>Last Owner Change</u>	<u>Acres Use Code</u>
1 Stoney Point South Parcel	2722-004-900	7/14/1982	15.92 620V Recreational Vacant Land
Stoney Point North Parcel	2723-004-900	7/1/1983	6.21 010V Residential Vacant Land
22 acres Purchased from Joseph Schurter in Jan 1982 for \$250,000			<u>22.13</u>
2 Flat area south of Stoney Point includes driveway	2722-004-901	9/25/1990	1.43 010V Residential Vacant Land
3 Property north of Stoney Point	2723-004-905	9/3/1999	0.444 8800 Govt Miscellaneous
Property north of Stoney Point	2723-004-907	9/3/1999	37.75 010V Residential Vacant Land
Property north of Stoney Point	2723-003-900	9/3/1999	14.25 540V Dry Farm Vacant Land
North of Stoney Point to the Freeway			<u>52.444</u>
4 Stoney Point Ranch west parcel	2722-004-903	8/22/2007	3.05 0100 Single Family Residence
Stoney Point Ranch east parcel	2722-004-902	8/22/2007	2.00 0100 Single Family Residence
South of Stoney Point on Topanga, easement on Andora (owned by LA City)			<u>5.05</u>
Total All Parcels			<u>81.054</u>